

## BEFORE CUSTOMS

## AFTER CUSTOMS

## GATES 8-37

### SHOPPING

|                             |     |
|-----------------------------|-----|
| Around Australia            | N17 |
| Produce by Around Australia | J17 |
| Forever New                 | H17 |
| Rolling Luggage             | I17 |
| Sunglass Hut                | I17 |
| Surf Dive 'n' Ski           | I17 |
| WHSmith                     | L17 |

### EATING & DRINKING

|                 |     |
|-----------------|-----|
| Grand Cru       | K16 |
| Hero Sushi      | I16 |
| Hokka Hokka     | M16 |
| Hungry Jack's   | K16 |
| Mach2           | N16 |
| Mad Mex         | M16 |
| Mrs Fields      | L16 |
| Nando's         | M16 |
| Oliver Brown    | N16 |
| Pie Face        | K17 |
| Pretzel World   | K17 |
| Roll'd          | J16 |
| Sahara Grill    | J16 |
| Soul Origin     | I16 |
| Subway          | J16 |
| Taste of Thai   | K17 |
| The Coffee Club | E17 |
| Toby's Estate   | J17 |
| Top Juice       | K17 |

### SERVICES & CURRENCY EXCHANGE

|                   |     |
|-------------------|-----|
| ANZ               | L20 |
| Australia Post    | O18 |
| Flight Centre     | K18 |
| Guardian Pharmacy | N17 |
| Travelex          | L17 |
| Travelex          | L18 |
| Travelex          | M17 |
| Travelex          | H17 |

### DUTY FREE

|                           |     |
|---------------------------|-----|
| HEINEMANN Tax & Duty Free | E13 |
| HEINEMANN Tax & Duty Free | I14 |

### SHOPPING

|                             |     |
|-----------------------------|-----|
| Around Australia            | H13 |
| Produce by Around Australia | F8  |
| Burberry                    | I13 |
| Purely Australian           | J15 |
| Purely Merino               | J15 |
| WHSmith                     | E10 |
| WHSmith                     | J4  |

### EATING & DRINKING

|                |     |
|----------------|-----|
| Bridge Bar     | E11 |
| Coast Cafe     | G12 |
| Hinata Sushi   | H5  |
| Hudsons Coffee | D13 |
| Hudsons Coffee | E8  |
| McDonalds      | J14 |
| Midori Bar     | E8  |
| Pie Face       | H5  |
| Viaggio        | I5  |
| SumoSalad      | H5  |

### SERVICES & CURRENCY EXCHANGE

|                   |     |
|-------------------|-----|
| Guardian Pharmacy | G6  |
| Travelex          | C12 |
| Travelex          | F9  |
| Travelex          | H13 |
| Travelex          | I6  |
| Travelex          | J4  |
| Travelex          | L15 |

### DUTY FREE

|                           |     |
|---------------------------|-----|
| A Little Something        | O16 |
| HEINEMANN Tax & Duty Free | T13 |

### SHOPPING

|              |     |
|--------------|-----|
| R.M.Williams | N15 |
| Think Sydney | Q14 |
| WHSmith      | P13 |

### EATING & DRINKING

|                       |     |
|-----------------------|-----|
| 58 1/2 Espresso       | T13 |
| Eagle Boys Pizza      | T13 |
| Take Me With You      | T13 |
| Bondi Bar             | T13 |
| Gloria Jean's Coffees | S14 |
| Italian Bite          | R13 |
| Little Bok Choy       | Q13 |

### SERVICES & CURRENCY EXCHANGE

|                   |     |
|-------------------|-----|
| Guardian Pharmacy | T14 |
| Travelex          | R12 |
| Travelex          | U14 |
| Travelex          | Q14 |

### AIRLINE LOUNGES

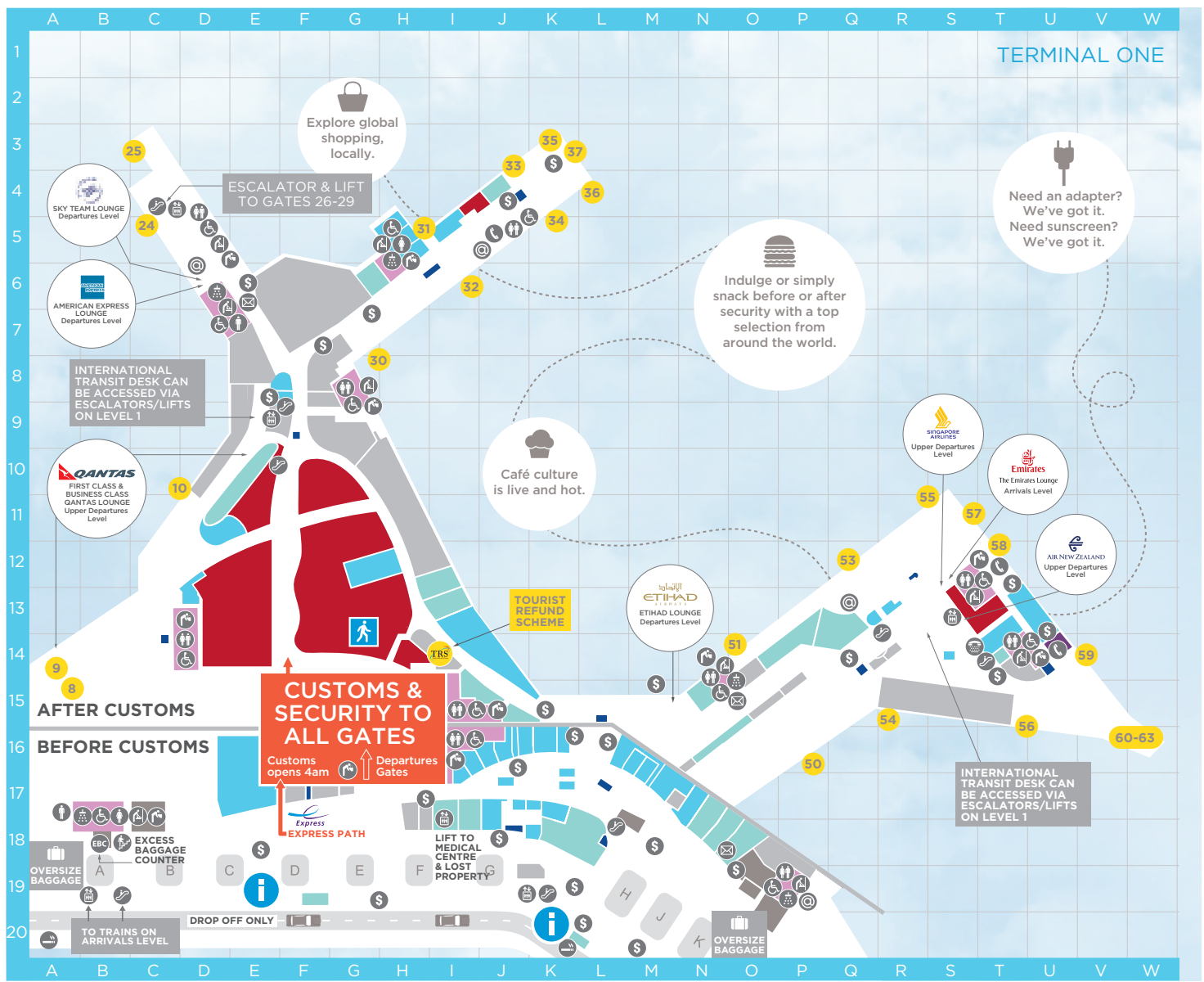
|                    |     |
|--------------------|-----|
| American Express   | D6  |
| Air New Zealand    | S13 |
| Emirates           | S12 |
| Etihad             | N15 |
| Qantas             | E10 |
| Singapore Airlines | S13 |
| SkyTeam            | D6  |

## TIME TO GATES FROM SECURITY

|                     |         |
|---------------------|---------|
| Time to gates 8-37  | 7 mins  |
| Time to gates 50-63 | 10 mins |

SMOKING IS NOT PERMITTED AFTER CUSTOMS

THIS STORE OPENS BETWEEN 4-5AM



- INFORMATION DESKS
- TOILETS
- ACCESSIBLE TOILETS
- PARENTS ROOM
- FILTERED DRINKING WATER
- SHOWER

- TELEPHONE
- TTY TELEPHONE
- LIFT
- ESCALATOR
- STAIRS
- ATM

- DESIGNATED SMOKING AREA
- POST
- FREE INTERNET KIOSK
- AIRPORT INFORMATION
- AFP TELEPHONE
- EXCESS BAGGAGE COUNTER

- SHOPPING
  - EATING & DRINKING
  - CURRENCY EXCHANGE
  - KIDS PLAY AREA
  - TOILETS
  - HEINEMANN TAX & DUTY FREE
  - UNDER DEVELOPMENT
- Airline offices are located on Level 3, access before customs

Every effort has been made to provide you with the most accurate information at the time of printing. Terminal map correct as at February 2016.

ENJOY FREE WI-FI THROUGHOUT THE TERMINAL